

MAGIC TIME BUDDY HANDBOOK

© The 2001 Dreamstreet Productions Ltd. Licenced by Copyright Promotions

System 4000

JR045

March 2001

JOLLY ROGER AMUSEMENT RIDES

THIS PAGE NOT USED

JOLLY ROGER AMUSEMENT RIDES

THIS PAGE NOT USED

JOLLY ROGER AMUSEMENT RIDES

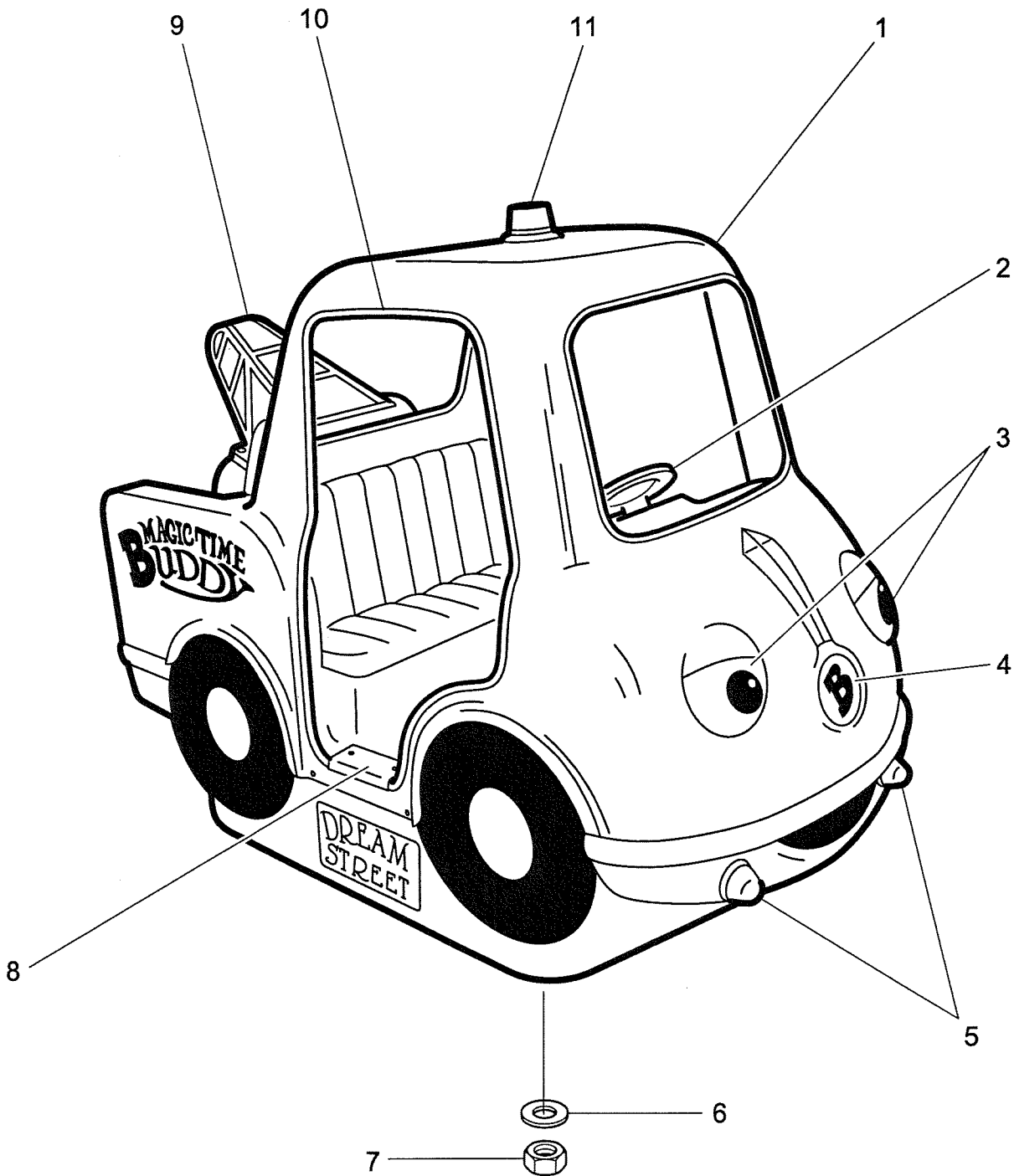


Fig 7 Magic Time Buddy body shell assembly

JOLLY ROGER AMUSEMENT RIDES

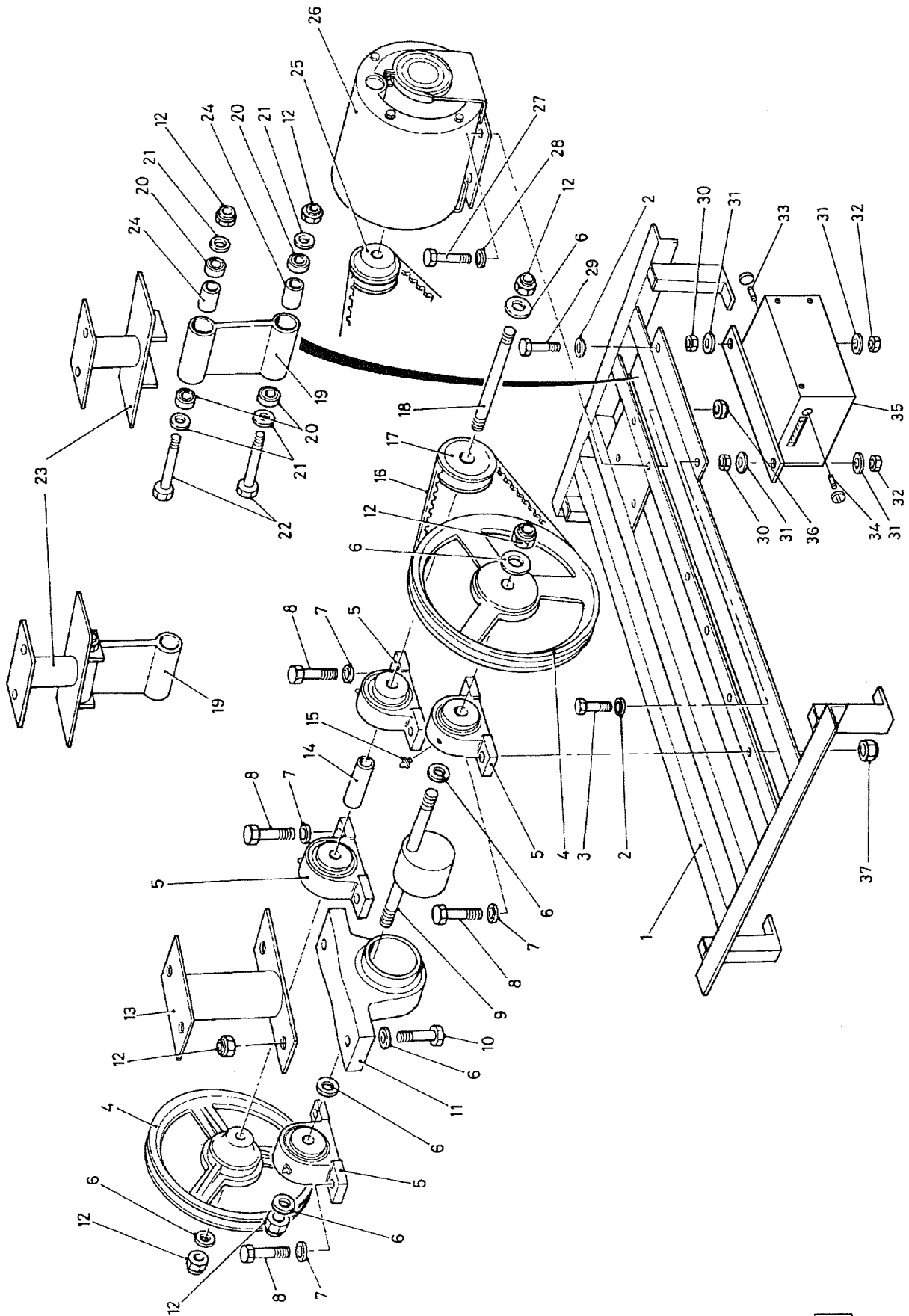
Parts list - C9 chassis assembly

† Item not illustrated

Item No	Part No	Description	QTY
35	2100011	Power supply unit	1
36	7700100	Nut, M8, Nyloc	4
37	7700200	Nut, M10, Nyloc	8
-	† 5120001	Castor, 2 inch	2

Note: Refer to manufacturer when ordering items from this list

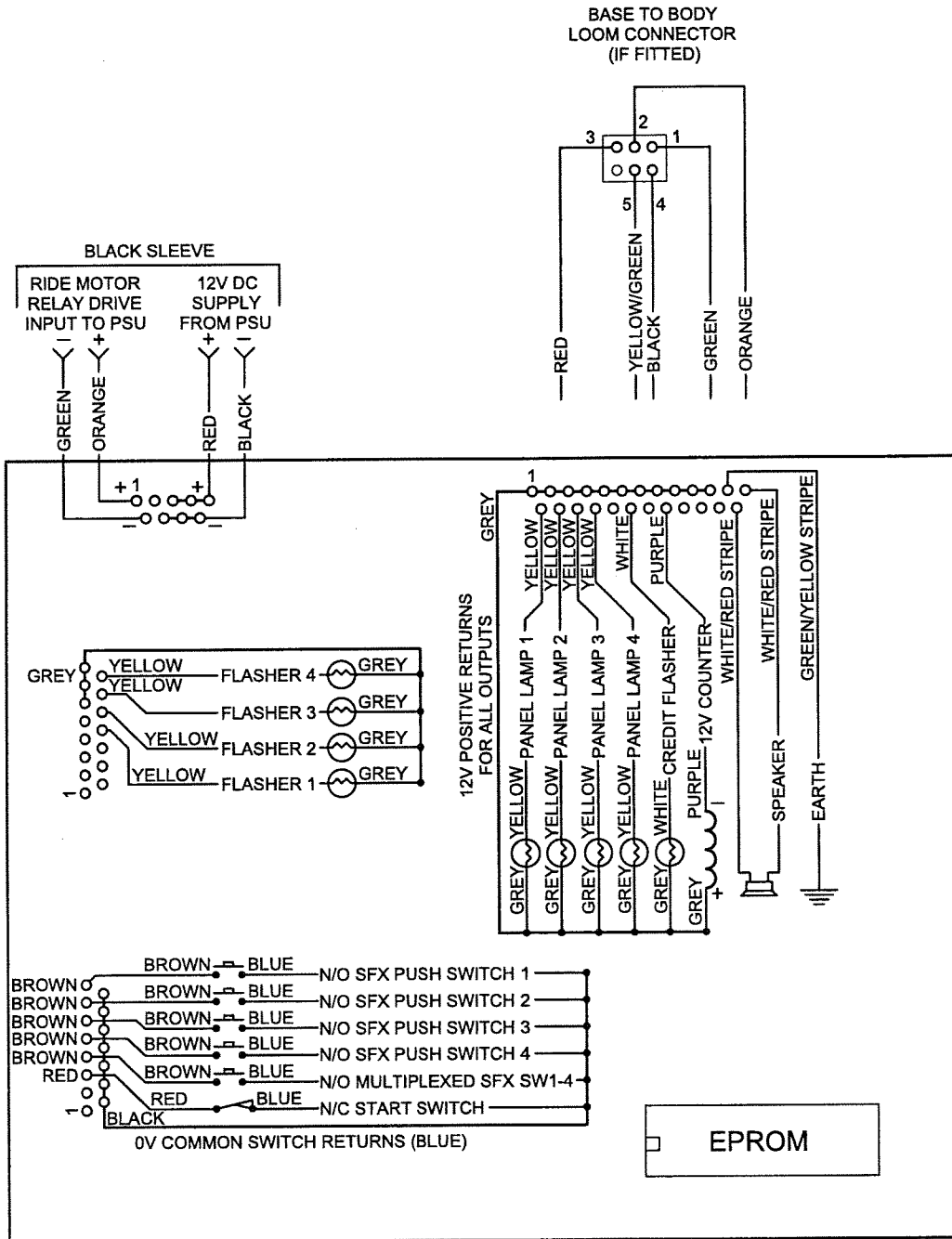
JOLLY ROGER AMUSEMENT RIDES



JR108

Fig 5 C9 chassis assembly

JOLLY ROGER AMUSEMENT RIDES



JR415

Fig 4 Wiring diagram cash box - Base to body loom connector (System 4000)

JOLLY ROGER AMUSEMENT RIDES

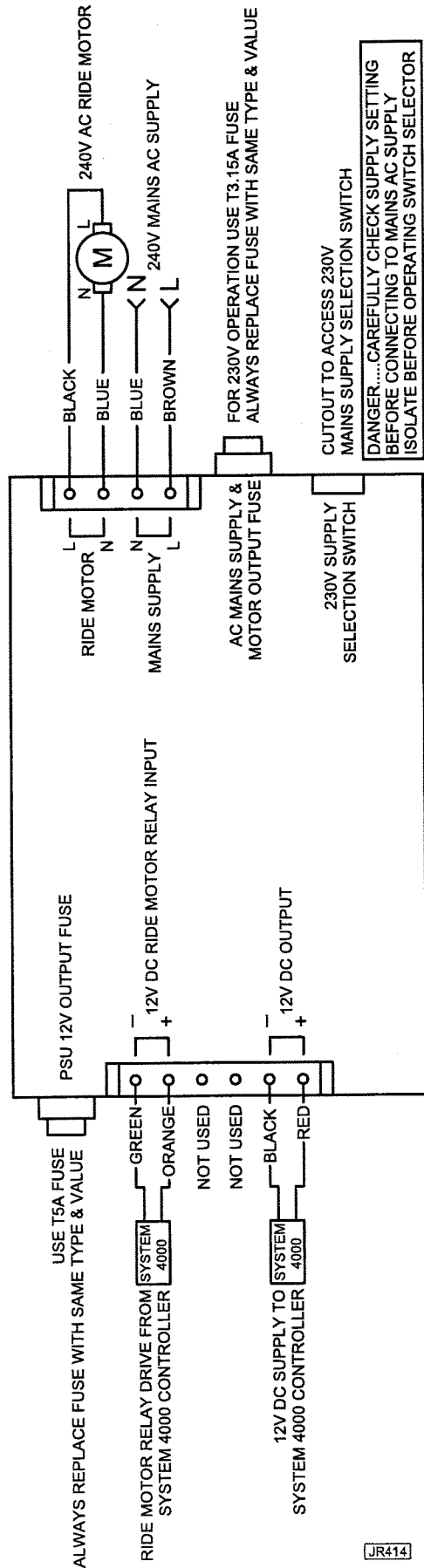


Fig 2 Wiring diagram (rides with 240 Volts supply) - (System 4000)

JOLLY ROGER AMUSEMENT RIDES

Fuses

4.18 Fuses are located in the side of the PSU. Never replace fuses with a higher value than recommended.

Body and other mouldings

4.19 Clean with damp cloth rinsed out in soapy water, do not hose down or flood the machine. Alternatively, a proprietary household furniture cleaner may be used.

Removal of body shell

NOTE

Refer to Figure 7 in Spare Parts section for item numbers.

4.20 To remove the body shell

4.20.1 Remove the nuts (Fig 7 item 7) and washers (Fig 7 item 6), situated under the body shell, which attach body to the chassis.

4.20.2 Disconnect the electrical wiring underneath the body shell by undoing the plug and socket connector.

4.20.3 Remove body shell.

Removal of bottom cover

4.21 To remove the bottom cover proceed as follows

CAUTION Care is to be taken when carrying out step 4.21.1



4.21.1 Turn ride on to its side.

4.21.2 Remove the 4 hexagon retaining screws that secure the bottom cover.

4.21.3 Refit in reverse order to the removal.

Daily checks

4.22 A check of each coin-operated Kiddie Ride should, whenever reasonably practical, be carried out each day before it is made available for the public. The following checks are recommended:-

4.22.1 Check that the mains plug is undamaged and securely attached to the mains cable.

4.22.2 Check that the mains cable is undamaged.

4.22.3 Check that there are no broken or damaged parts of the ride which may cause injury.

4.22.4 Check that all guards are in place thus preventing any access to the mechanism.

4.22.5 Apply pressure to the ride to ensure that it is firmly secured to the base stem and check that all advisory literature is in place.

JOLLY ROGER AMUSEMENT RIDES

Ride time

4.9 SW2 is used to set the ride time. The ride time can be set from 30 seconds to 120 seconds in 15 second increments or to run for as long as the main background soundtrack.

SW2

Ride Time	S1	S2	S3	S4
30 secs	off	off	off	OFF
45 secs	on	off	off	OFF
60 secs	off	on	off	OFF
75 secs	on	on	off	OFF
90 secs	off	off	on	OFF
105 secs	on	off	on	OFF
120 secs	off	on	on	OFF
Ride time set to soundtrack	on	on	on	OFF

NOTE

S4 is used for a diagnostic test sequence during manufacture and under normal operating conditions is not used and must be set to the OFF position.

Additional ride features

4.10 SW3 selects additional ride features.

SW3

	S1	S2	S3	S4
Prompt phrases On/Off	On/Off	x	x	x
Attract sounds On/Off	x	On/Off	x	x
Count no. of Rides	x	x	On	x
Count No. of Coins (coin mech. Base coin value)	x	x	Off	x
Select <i>Price of Play</i> options	x	x	x	On
Select <i>Credit Program</i> options	x	x	x	Off

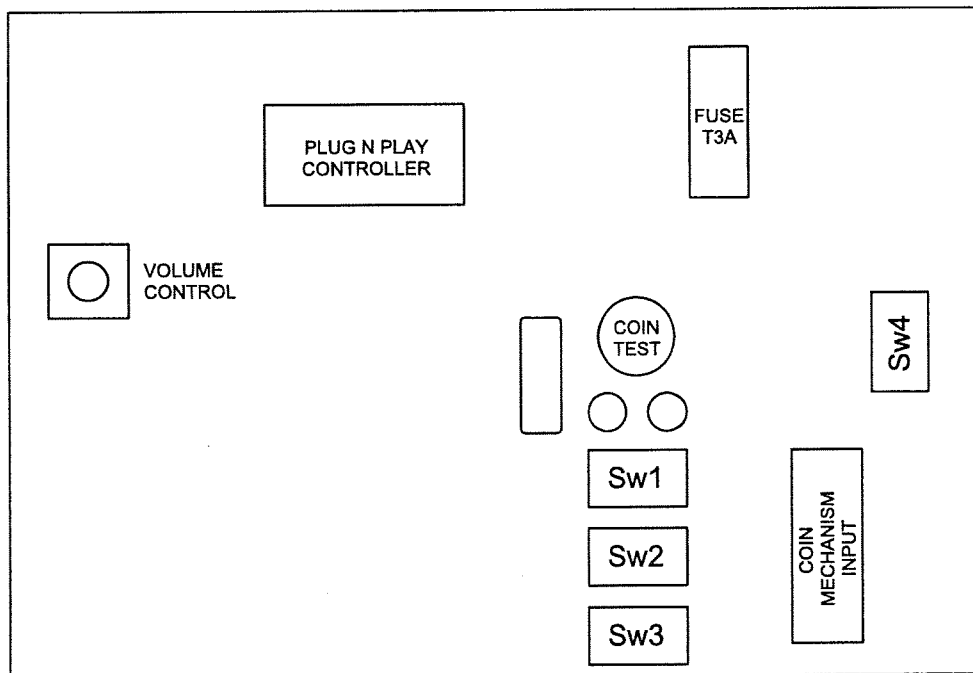
JOLLY ROGER AMUSEMENT RIDES

Configuration adjustments

4.7 The programmable control unit has four externally accessible DIL switches, SW1, SW2, SW3 and SW4, which are used to select the most popular modes of operation.

NOTES

1. It is advisable to remove the control unit from the ride as this will assist viewing the switches. Refer to para 4.2 for removal of the control unit.
2. All alterations to these switches should only be made after power to the ride has been turned off, as this will avoid any unintentional damage to the control unit and/or the ride.



JR419

Fig 1 Programmable control unit

JOLLY ROGER AMUSEMENT RIDES

MAINTENANCE

GENERAL

4.1 The rides do not require any periodic maintenance but, they should be checked regularly to ensure that they are in a safe condition for operation by the general public. In the unlikely event of the need to make adjustments or repairs to the machine, the following procedures are recommended.

WARNING ALWAYS DISCONNECT THE MACHINE FROM THE POWER SUPPLY BEFORE REMOVING ANY COVERS OR COIN MECHANISMS.



Control unit

4.2 The control unit, which operates at 12 volts, is located at the back of the coin acceptor compartment. To remove/refit the control unit proceed as follows:

4.2.1 Remove the coin acceptor (para 4.3 or 4.4).

4.2.2 Remove the 2 thumb nuts located at each end of the unit.

4.2.3 The control unit may now be removed by pulling it forwards and withdrawing it through the coin acceptor aperture in the cash box assembly.

4.2.4 The mode of operation may now be altered by referring to the basic configuration, as printed on its enclosure, or by referring to the advanced configuration referred to at para 4.7.

4.2.5 Refit the unit by positioning it on the 2 locator bolts and gently pushing it back into place, ensuring that the plugs and sockets connect to each other.

4.2.6 Refit the 2 thumb nuts to ensure a good connection between the plugs and sockets. A poor connection could result in failure of the unit.

Coin acceptor (mechanical)

4.3 To remove/refit the coin acceptor proceed as follows:

4.3.1 Remove the coin acceptor by turning the lock situated on the faceplate - the coin acceptor can now be removed from the machine and the wires pulled off the coin acceptor microswitch if desired.

NOTE

Ensure that the wires are reconnected on the correct terminals (C and NO).

4.3.2 To remove litter from the coin acceptor, slide off the spring clip on the top of the mechanism and remove side plate, then remove any litter or obstruction.

4.3.3 Refit the coin acceptor in reverse order to removal, ensuring that the pins on the main coin acceptor body locate in the dimples on the side plate.

4.3.4 Adjusting screws for coin diameter and thickness are also located on the side plate, these are factory set and should not normally require alteration.

JOLLY ROGER AMUSEMENT RIDES

INSTALLATION

Siting

2.1 A common sense approach should be adopted when siting Kiddie Rides. The following items are an indication, but not exhaustive:

2.1.1 Position the Ride on a level surface.

2.1.2 Ensure there is adequate clearance all round the Ride to minimise the risk of injury to the passengers or public.

2.1.3 DO NOT obstruct emergency exits.

2.1.4 DO NOT obstruct fire appliances, hydrants etc.

2.1.5 If sited outside:

DO NOT operate in adverse weather conditions.

NOTE

This ride is considered suitable for outdoor protected locations.

CAUTION



For safety reasons the electrical wiring is colour coded as follows:

For rides with 220-240 volt electrical supply, the wiring colour coding is as follows:

Brown - live
Green/Yellow-earth
Blue - neutral

For rides with 110-120 volt electrical supply, the wiring colour coding is as follows:

Black - live
Green - earth
White - neutral

JOLLY ROGER AMUSEMENT RIDES

INTRODUCTION

Thank you for purchasing your new Kiddie Ride from Jolly Roger (Amusement Rides) Limited and we trust it will give many years of trouble-free profitable service.

Whilst this booklet has been produced primarily with our United Kingdom and European customers in mind, it will certainly be of benefit to other users worldwide.

Reference is made to the United Kingdom Health and Safety at Work Act - Code of Safe Practice at Fairs (which specifically includes coin operated Children's Rides), the Industry Standard for the construction, operation and use of coin-operated Children's Rides, and the EC Declaration of Conformity (CE Mark).

The Rides comply with United Kingdom and European Community regulations, and are ETL listed to comply with US Standard UL 22 covering Amusement Games and Canadian standard C22.2 No 68 covering motor operated appliances

The rides are designed for intermittent use and the maximum anticipated duty cycle is 30 operations per hour.

The guidance given in this publication is relevant to the safe operation of children's rides wherever they may be operated.

WARNINGS & CAUTIONS

The international safety sign is used throughout this Handbook where specific safety precautions are detailed. The sign is positioned so that the precautions are readily identifiable.

INTERNATIONAL SAFETY SIGN

WARNING



WARNINGS

Warnings call attention to instructions which must be followed precisely to avoid injury or death.

CAUTIONS

Cautions call attention to instructions which must be followed precisely to avoid